



Burns across the ages: The Issue of dementia

Prof Andrew Robinson

Wicking Dementia Research and Education Centre

Dementia is THE Public Health issue of the 21st Century

2019 World Alzheimer Report (Alzheimer's Disease International)

- World population rapidly ageing
- Estimated 50 million living with dementia worldwide currently.
- 152 million by 2050
- Someone develops dementia every three seconds
- current annual cost estimated at US \$1trillion, set to double by 2030

Cause	2009	Rank	2018	Rank
Ischemic heart disease	22587	1	17533	1
Dementia	8280	3	13963	2
Stroke	11216	2	9972	3
Trachea/lung cancer	7786	4	8586	4
Chronic lower respiratory diseases	5984	5	7889	5
Colorectal cancer	5244	6	5420	6
Diabetes	4176	7	4656	7
Blood/lymph cancer	3811	8	4612	8
Urinary system disease	3315	9	3384	9
Prostate cancer	3111	11	3264	10

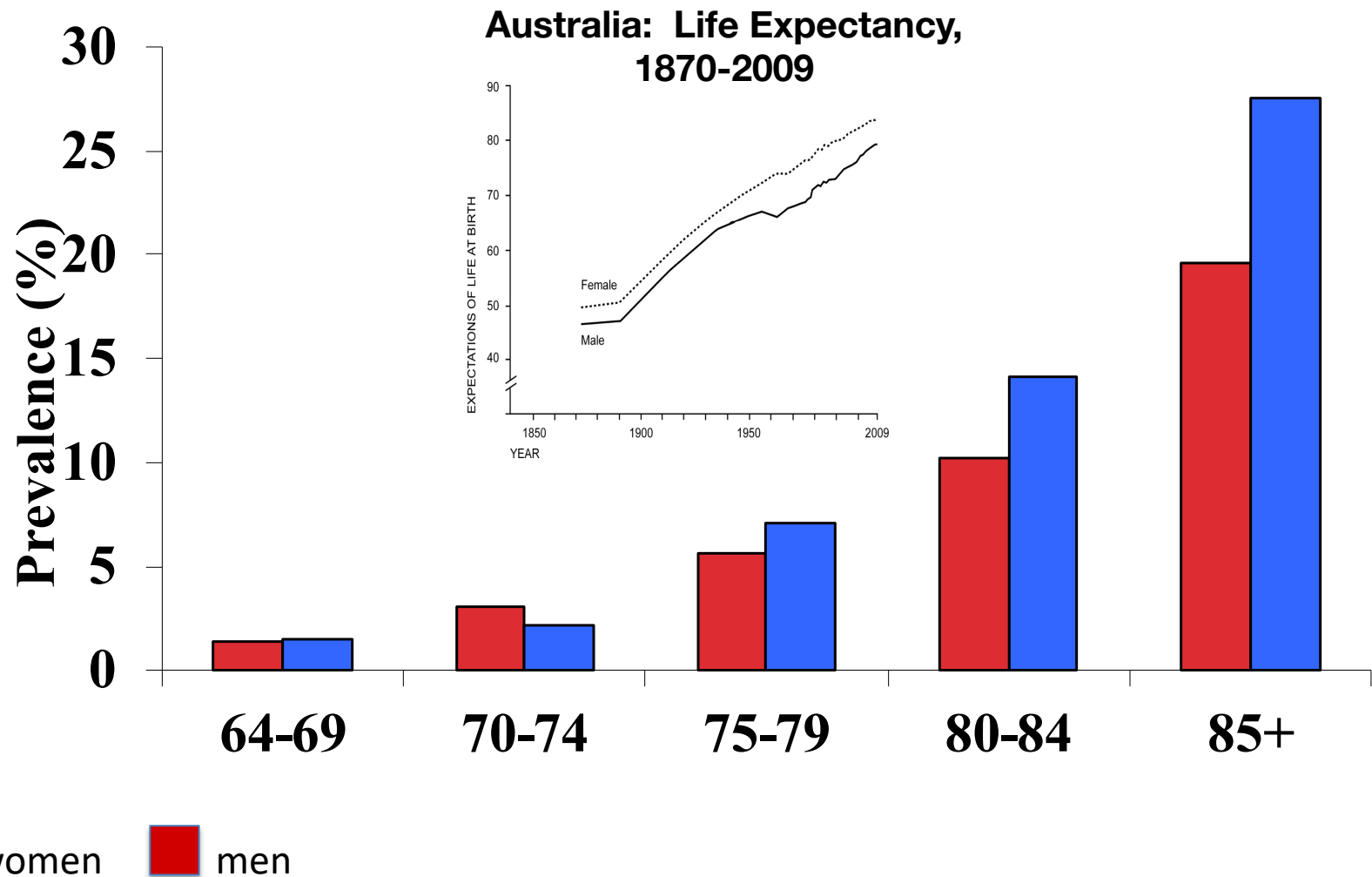


Dementia is THE Public Health issue of the 21st Century

Impact of dementia in Australia

- 2018: ≈ **425,416** people living with dementia
- 2050: ≈ **942,624** people living with dementia
- 2nd leading cause of death overall BUT **leading cause for women**
- Cost to Australia \$15 billion
- ≈ **1 million** people care for a relative or friend with dementia

Prevalence of dementia by age



Source – MRC-Cognitive Function and Aging Study
Overall risk approx 6.6% over age 65 (95% CI 5.9-7.3)

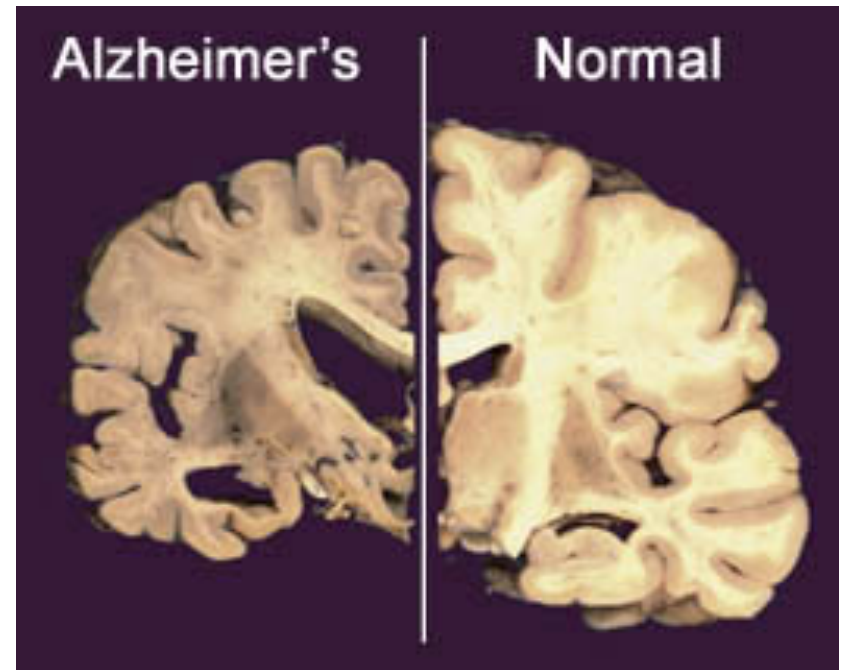
What is Dementia

A **progressive, global, life-limiting condition** that involves **generalised brain degeneration** that effects people in different ways and has many different forms

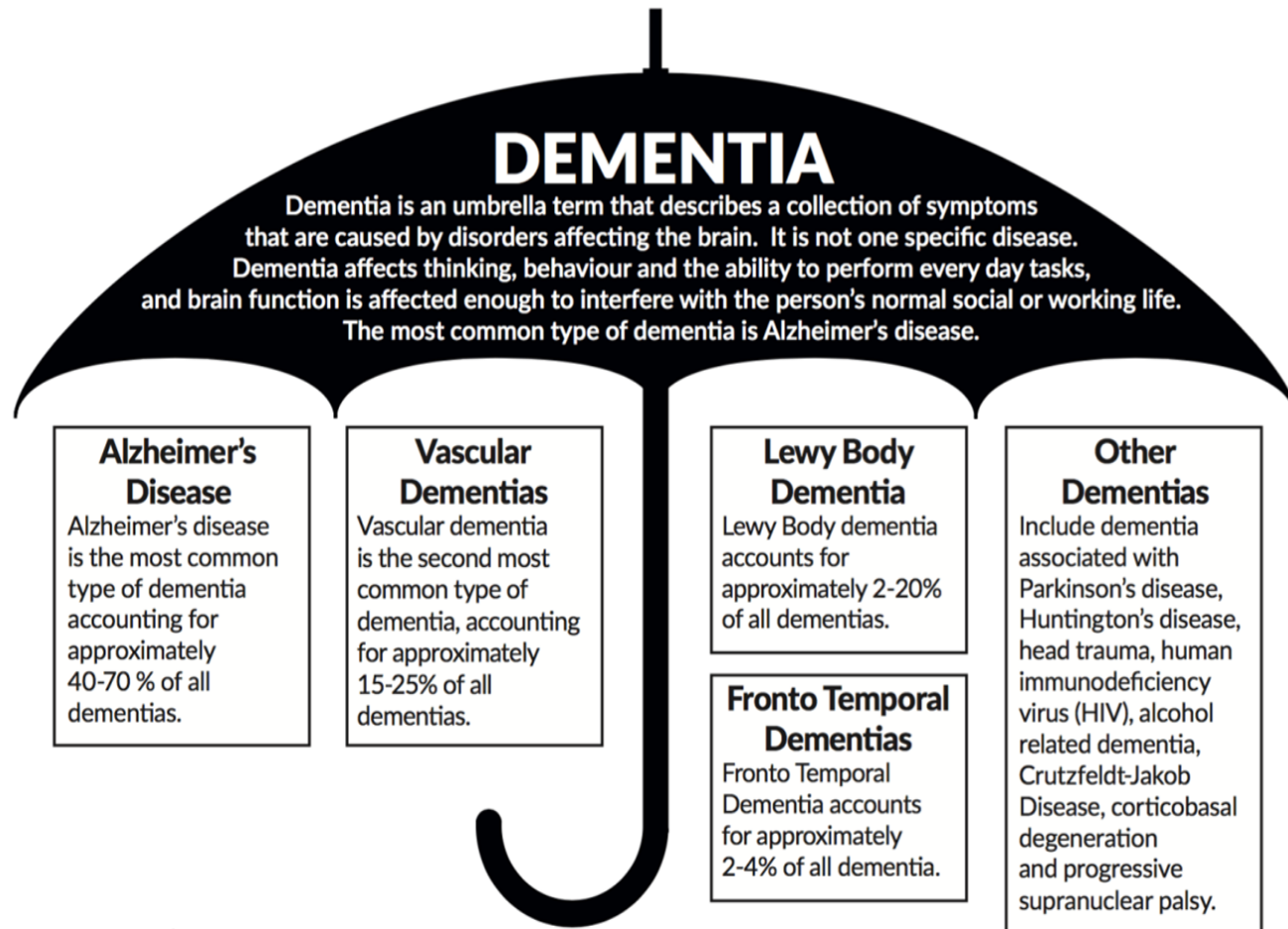


What is Dementia

People **die** from dementia due to loss of brain function, which impacts body functions necessary to sustain life.



What is Dementia



Kate Swaffer © 2016

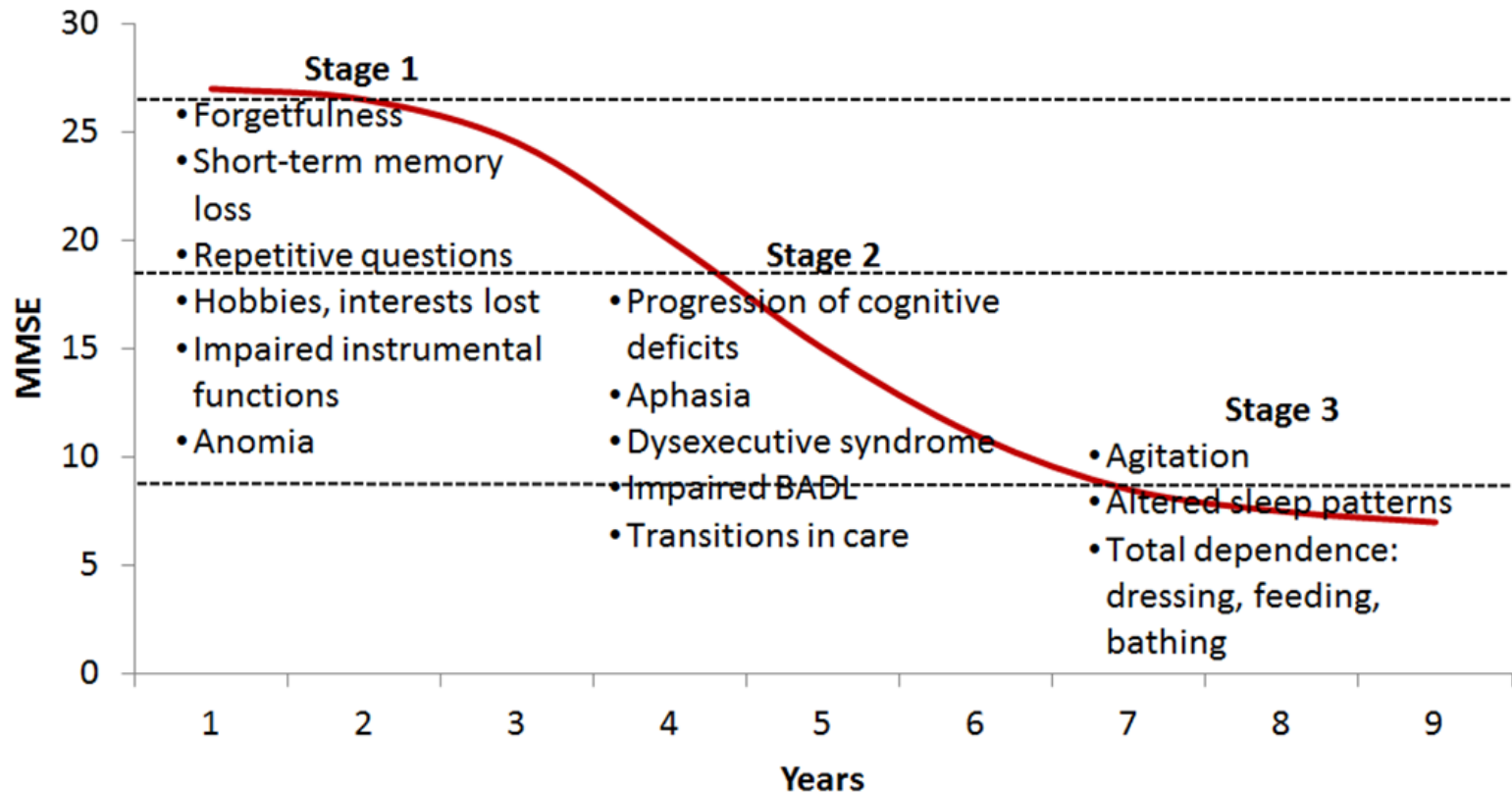


UNIVERSITY of
TASMANIA

WICKING
DEMENTIA RESEARCH
& EDUCATION CENTRE

Stages of Dementia

Symptom Progression in AD



BADL= basic activities of daily living.

Modified from Feldman et al. *Clinical Diagnosis and Management of Alzheimer's Disease*. 1st ed. 1998



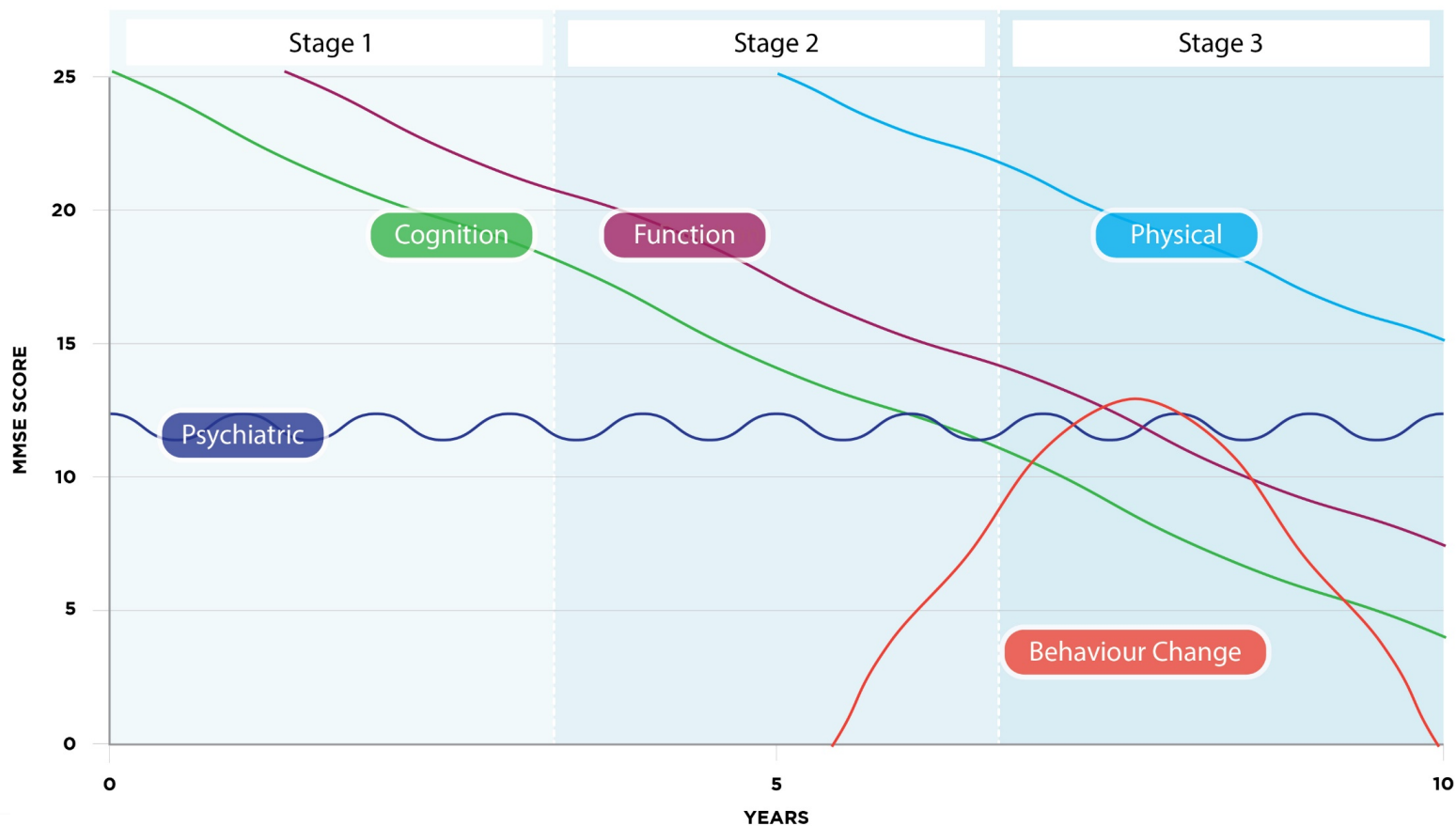
Domains of Dementia

1. Cognitive decline
2. Functional decline
3. Psychiatric symptoms
4. Behaviour changes
5. Physical decline



Stages & Domains

Stages and Domains of Alzheimer's Dementia



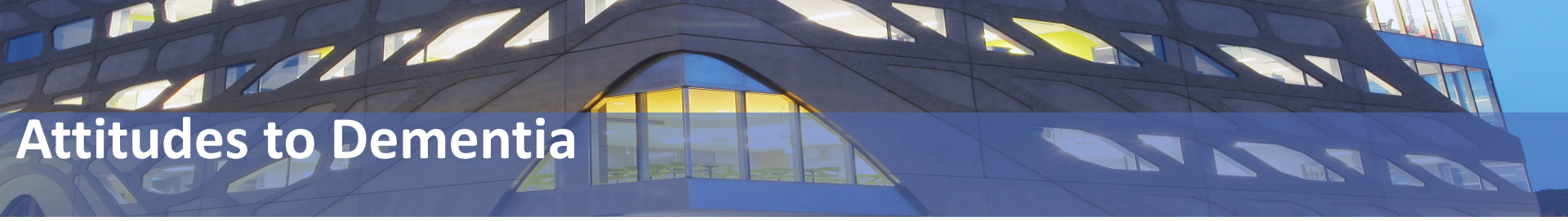


Dementia is THE Public Health issue of the 21st Century

What's the problem with dementia?

Dementia is complex:

- Under diagnosed
- Poorly understood
- Not just one person's disease
- A social and medical issue
- Has a variable trajectory
- Is a terminal illness



Attitudes to Dementia

World Alzheimer Report 2019

- **35%** of carers globally have hidden the diagnosis of dementia of a family member
- **62%** of healthcare providers worldwide think that dementia is part of normal ageing
- **40%** of the general public think doctors and nurses ignore people with dementia



Burns and Dementia: State of Play 2018

Burns Registry of Australia and NZ 9th Annual Report

Older people are disproportionately at risk of burns

- 13% of all adult patients (n=331) were over the age of 65
- Most common cause of burn injuries was a scald - 42 %
- 81 % of older adults sustained burn injuries in the home
- Kitchen most common location (32 %)
- Spend longer in hospital than young and middle-aged - median length of stay 9 days
- 70% went to theatre for a surgical procedure, & 76% received a skin graft



Burns and Dementia

Burns Registry of Australia and NZ 9th Annual Report

No mention of dementia!

Alden et al (2005) report that the role of dementia in elderly burn patients has not been studied in depth.

- Burn injuries in this patient population can be severe
- mortality rate was 25%, almost double that of the non dementia group (13.8%).



No mention of Dementia!

Harvey et al (2015) report on a linked burn-related hospital and death records:

- People with dementia had 60% increased risk of hospitalisation compared to people without.
- Burns in people with dementia were more severe than for people without.
- Dementia was independently associated with increased LOS.
- People with dementia more likely to be burnt by hot tap water and ignition of clothing or nightwear than those without.



No mention of Dementia!

Harvey et al (2015) conclude:

Burns in people with dementia are significant injuries, which have not decreased over the past ten years despite prevention efforts to reduce burns in older people.



Why aren't we thinking about dementia?

- Health systems are not well oriented towards quality dementia care.
- Very little dementia content in health professional courses, and workforce training can be limited.
- Wicking Centre research showed dementia knowledge deficiencies in aged care workers, nurses, doctors and family carers.
- Limited educational resources that provide information in a systematic, evidence-based fashion.

Need for an educational insurgency to address knowledge deficits



An educational insurgency!

Understanding Dementia MOOC – building dementia literacy

7 week course

Module 1 – The Brain

- Normal Brain Anatomy
- Normal Brain Function
- Pathology of Dementia
- Future Directions of Research

Module 2 – The Diseases

- How is dementia different to normal ageing?
- Risk Factors
- Early Warning Signs
- Diagnosis
- Dementia Symptoms
- Medical Management

Module 3 – The Person

- Dementia Progression and Staging
- Living with Dementia
- Dementia Palliation
- Behaviours in Dementia
- Dementia Design
- Dementia-Friendly Communities
- Strategies and Therapies

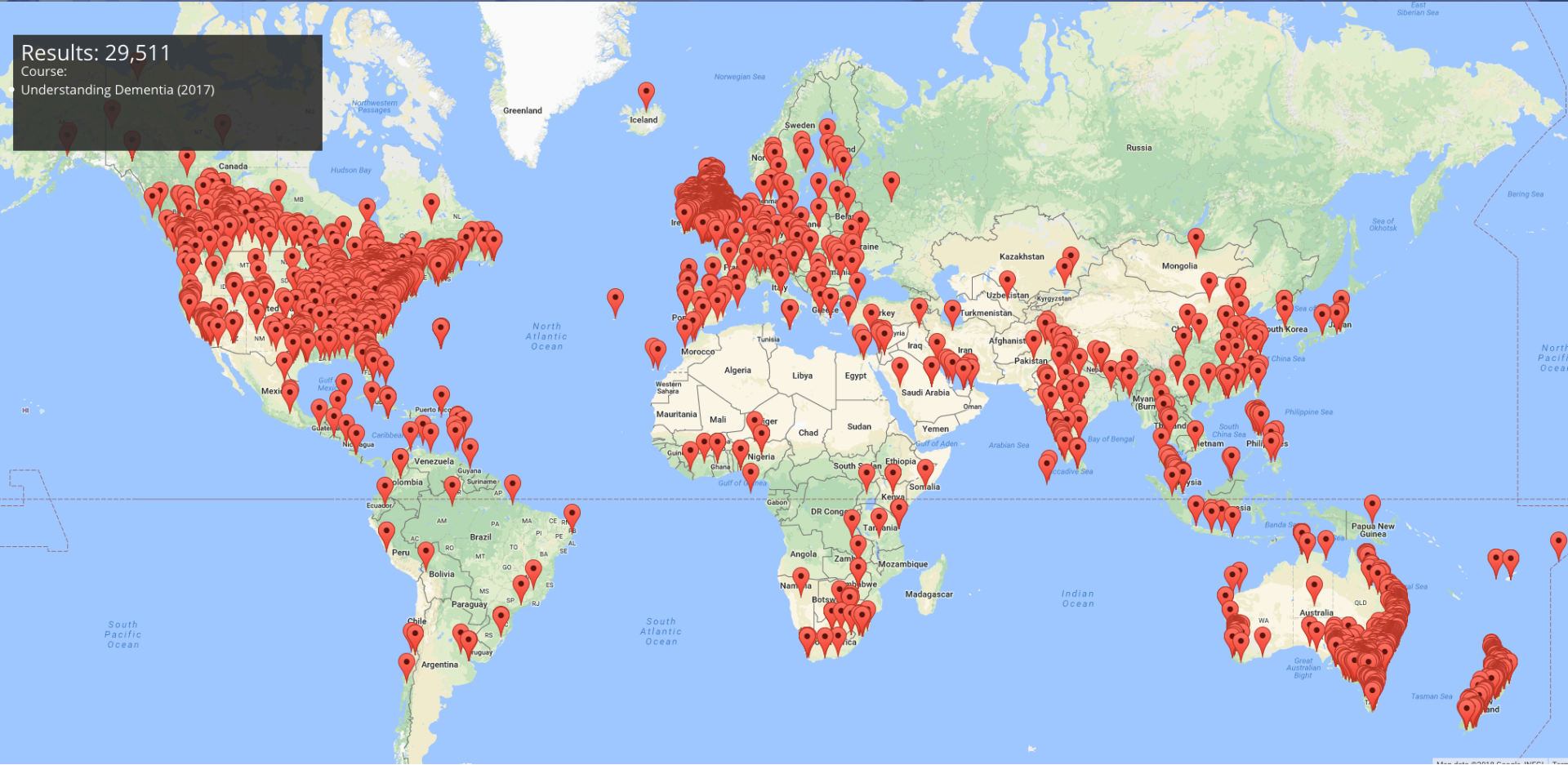
UNDERSTANDING
DEMENTIA



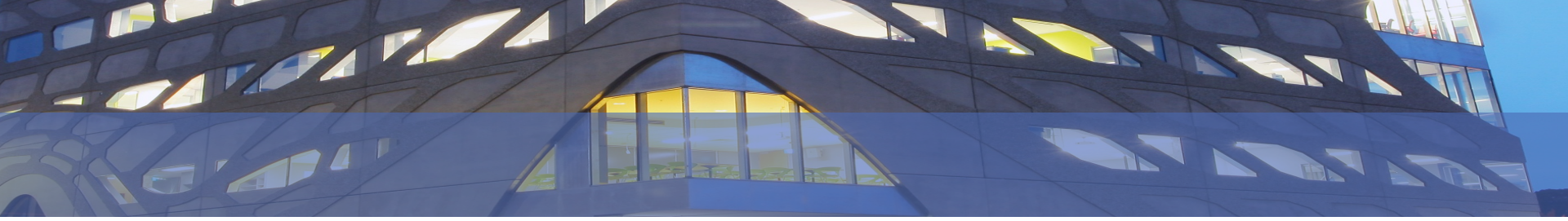


Understanding Dementia 2017

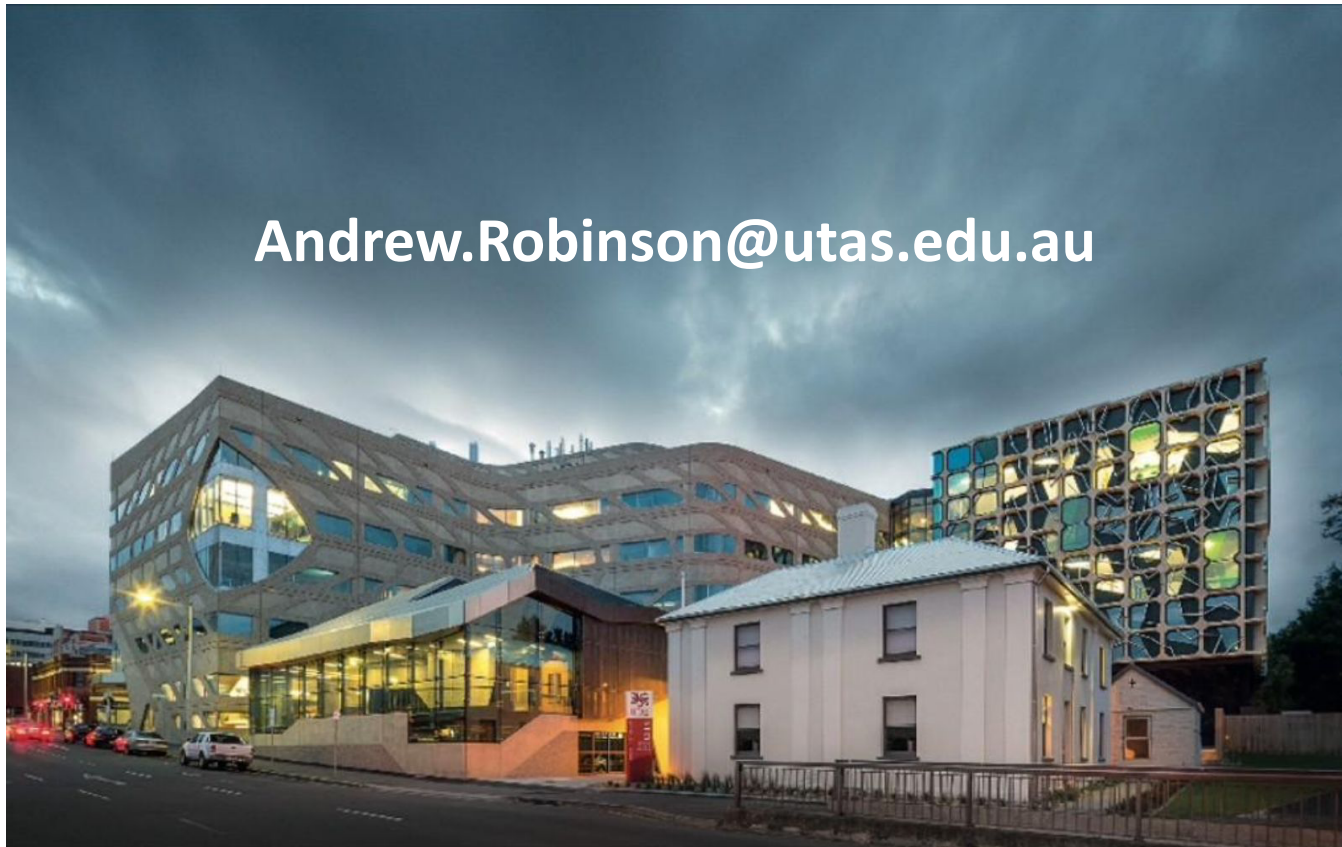
Results: 29,511
Course:
Understanding Dementia (2017)



In 2019 212,999 enrollees (average ~ 39% completion)



Andrew.Robinson@utas.edu.au



www.utas.edu.au/wicking